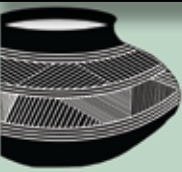


ELGIN PUBLIC MUSEUM

Of Natural History & Anthropology

COLLECTIONS

Learning Through Adventure



MISSION STATEMENT

The mission of the Elgin Public Museum is to enhance understanding of the Natural Sciences and Anthropology through exhibits and interactive experiences.

EPM Hours

Labor Day to Memorial Day

Saturday & Sunday 12 - 4 pm

Dec. 18th through Dec. 31st

Touching on Traditions 12 - 4 pm

Memorial Day to Labor Day

Tuesday through Sunday 12 - 4 pm

Closed Mondays

For additional information or to register in advance for an event or program please call : 847-741-6655
Visit our website for more information at www.elginpublicmuseum.org

Temporary Exhibits

Elgin's Natural Treasures
Trout Park and Bluff Spring Fen



Pictures and text help explain these two unique habitats here in Elgin.



**Celebrating
Native American
Achievements and
Contributions**

Cleaning House

by Michael McGrath

Fact: the Elgin Public Museum has over five thousands of objects in our collection storage rooms.

Fact: the Museum's ideal storage space is not large enough to properly preserve the specimens in our collection.

Fact: during the last inspection and inventory of our collection, over 10 years ago, it was deemed that over a hundred objects were in very poor condition and should be removed from the collection.

Fact: this task has not been completed.

Until This Summer.



Shelves of rocks and mineral are very forgiving of their environmental home.



In the Lab, Tilly stands guard over bins of bagged birds and other artifacts.

Under the watchful eye of our collection manager, Beth O'Toole, myself along with an excellent group of volunteers, started the task of deaccessioning and disposition. We needed space in our main collection room to properly store the zoological portion of our natural history collection, and objects from our anthropological collection, especially the Native American portion, of which many pieces are very fragile.

To preserve these objects, the environment in which they are stored must be controlled. Extremes of light, humidity, and temperature can and will lead to the deterioration of the specimens. If objects are crammed together, problems arise. Not only would this hinder ideal environmental conditions, but also the chance of damaging a delicate object increases. Since it is our responsibility to care for these objects for you, the public, it had come to a time to create more space.

continued on page 5

From the Director - Margaret "Peggie" Stromberg

The Elgin Public Museum is working with a consultant for a strategic plan and future fund raising. One of the really important components to come from the planning is the new mission statement adopted by the board on August 21, "The mission statement of the Elgin Public Museum is to enhance understanding of the natural sciences and anthropology through exhibits and interactive experiences."

We have had a good summer at the Museum, and we are looking forward to Fall and Winter. We have already been planning our programming for next year, trying to work within our limited budget. If you have subjects you would like covered, or know of any interesting speakers, please let me know. Actually my biggest news is personal. I became a grandmother for the first time. My daughter and her husband had a baby girl on July 28. This is the daughter who was married at the Museum two and a half years ago. Sabrina Clair has become a new member of the Museum.

Our Native American Cultural Day and Bison Blessing is coming up on October 2, and complete details are elsewhere in this newsletter. In addition to the usual activities, we also will be presenting a new exhibit about the contributions made to our country by Native Americans. Touching on Traditions will be here very soon and we anticipate another great display. Book school programs now.

Fire, floods, earthquakes, disasters all. Greg Vogel will give a lecture about the Archaeology of Disaster at 7:00 pm on September 17. Back for another interesting evening is Dr. Catherine Bird, an Elgin archaeologist, who will speak about Indian mounds in the Lake Geneva area. When Dr. Bird spoke last year it was one of our most popular programs. The Winter Solstice is another very popular program and will be held this year on December 18.

We have been very fortunate this year to partner with Elgin Community College, Elgin Climate Change, Elgin Community Network, Friends of Lords Park Zoo, Boys and Girls Club of Elgin, Elgin Parks and Recreation, Hawthorn Hill Nature Center, Elgin Community Gardens, Judson University, Elgin Area Historical Society and other groups. We firmly believe that inter-agency partnerships are the future for the Museum and other Elgin non-profit groups. I have almost certainly forgotten someone, but it was unintentional.

EPM STAFF

Executive Director

Margaret "Peggie" Stromberg

Museum Coordinator

Michael McGrath

Education Coordinator

Sara Russell

Educator

Marge Fox

Museum Attendant

Amanda Wolf

Diana Beltran

Collections Supervisor

Elizabeth O'Toole

EPM BOARD MEMBERS

Martha Yochum

Gilbert Nore

Dwight Armistead

Mark Havemann

Clare Ollayos

Diane Ramsay Shedd

William Barnes

Sal Camacho

Don Quillman

MUSEUM GOLD

A special THANKS to all those who support our mission. We couldn't do it without you!

New and Renewed Membership

Dwight & Betsy Armistead

Bill & Jan Jones

John & Ruth Bradburn

Joan Berna

JoAnn Armenta

Trini Armenta

Anne Bird

Karin & Gentry Jones

Gordon Garcia

Diane Ramsay Shedd

Carl & Mary Flaks

David & Sandra Kaptain

Ed & Karen Schock

Mary Gaston

Lawrence & Joan Damhorst

Christine Quinones

Donors

Dwight & Betsy Armistead

Illinois Tool Works

Paul & Teresa Steder

Carl & Mary Ellen Flaks

Dianne Ramsay Shedd

David & Sandra Kaptain

Betty Meyer

Don't toss that old digital camera in the trash. The one we use here at the Museum is a prototype of the first models on the market. If you think you have something a little more up to date, we could sure use it to record events, and exhibits. Give a call if you might be able to help us.

The Elgin Public Museum is a public institution whose purpose is to enrich the lives of the people within our community. Your membership and donations are vital ingredients in the success of our mission. Because of your support and generosity we are able to present programming either free or at reasonable rates for all, in the hopes all our citizens can greater understand and appreciate the complexity of the world around them.

THANK YOU!

Don't Miss Native American Family Day *Inspirational, Educational, and Entertaining*

Saturday, October, 2nd, 10 a.m. - 4 p.m.

Things are always changing. Because of certain limitations, last year we turned our fall event, Native American Cultural Days, into **Native American Family Day** and presented it at the Museum. Despite its reduced venue the day was deemed a success. What we learned from last year is that our community appreciates this yearly event and we're planning to offer more than ever thanks to a generous grant from Elgin Parks and Recreation. One of the traditional highlights is the **Bison**



Blessing being conducted at Noon by Joseph Standing Bear of Midwest S.O.A.R.R.I.N.G. This prayer awakens the sacred and spiritual connection we have with all other life on earth. It's always been a very solemn and moving experience. Come talk to Sal "Red Hawk" who will again give



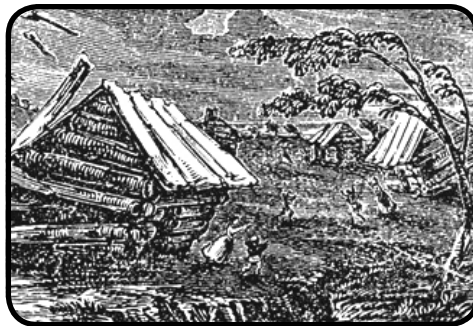
his hauntingly beautiful music. Games and activities will be available for the children all day long. Join us and expand your horizons to the diverse cultural world we live in.



his **Life Styles of the Potawatomi** program, complete with a Woodland Indian wigwam, period artifacts and a cooking fire. Shawndra Campbell and her 2 daughters will demonstrate **fancy shawl and jingle dress dancing** and explain their significance in Native American culture. And Native American flute artist Bill Buch-

Another Lecture for Our Adult Patrons

Over the last few years EPM has taken advantage of the Illinois Humanities Council's Road Scholars Speakers. This program features scholarly speakers, many of them university professors. Earlier this year Norman Moline was at the museum talking about the history of settlement in Illinois during the early 1800s. Coming Sept. 17th, Dr. Gregory Vogel will be here presenting a lecture titled ***The Archaeology of Disaster***. If you're someone with a craving for knowledge about the world around you, don't pass these programs up. And they're FREE! But reservations are required.



The 1811 & 1812 New Madrid Earthquakes, at 8.1 on the Richter scale, were the most powerful ever in the country's heartland.

TOUCHING ON TRADITIONS

*It's returning to the
Museum again this year.*

After what seemed like a lifetime, the tradition of displaying *Touching on Traditions* at the Lords Park Pavilion came to an end last year. There was some apprehension on our part when we decided to make the change. Many challenges that had to be overcome. First the museum wasn't as large as the Pavilion and some displays had to be eliminated. Accommodating school classes was also a concern. With a diagram of the floor space, tape measure and knowledge of the displays, our master planner, Sara Russell got to work. Of the 62 countries we had available about a dozen had to stay in storage. Concentrating on regions of the world and different cultures, a floor plan was finalized which allowed a smooth flow of 2 simultaneous classes enjoying the stories from around the world.



*The Nisse from Norway always have a treat at the holiday season.
Do you know what is?*

Last year we received many compliments from individuals telling us what a beautiful setting the museum is for this exhibit. If you missed it, start this new tradition with us.

**Remember, as members
the programs are FREE.**

**Some Special Programs are in
the works. Follow our website
for more information**

UP COMING EVENTS AND PROGRAMS

Archaeology of Disaster

Friday, September 17th, 7p.m.

Fire, flood, famine, war, plague, earthquake . . . All major disasters leave distinctive signatures in the archaeological record. From the New Madrid quakes of 1811 and 1812 that changed the very course of the Mississippi River, to the Great Flood of 1993, Illinoisans are adapting today to events that have a history long beyond living memory. Archeologist Gregory Vogel explains the prehistory and history of these events and the lessons they may hold for us today.

Admission \$7, Members \$4
Reservations Required.

Native American Family Day

Saturday, October 2nd, 10am-4 pm

Come to EPM for the annual celebration of Native American culture. Throughout the day different activities will be available to the public. See native dancers, and musicians. One of our most popular events, the Bison Blessing, will be held at noon, across from the bison pen. A Native American elder will bless and thank the bison for all that they have provided. Enjoy a portrayal of a Potawatomi Indian from the late 18th and early 19th century, as performed by Sal "Red Hawk" Camacho of Elgin.

A FREE event for the entire family

Bison Feeding Schedule

You have no idea how big and impressive these creatures are until you're nose to nose with them.

October 16th, November 13th
and December 11th.

Programs start with an introduction at the Museum at 7 AM

**\$2 per person, \$5 per family
EPM members FREE**

F - Family Program

Science Night Schedule

Our monthly hands on education experiences for children.

Paleontology

Friday, September 24th, 6-8 pm

Curious about the natural world around you? Bring your family to Elgin Public Museum's Science Night!

Different stations will be set up around the museum for kids and their parents to conduct experiments, experience demonstrations and partake in discussions about this month's topic: Dinosaurs! See the website for more details about this drop-in program.

Space Odyssey

Friday, October 22nd, 6-8 pm

Gas planets, red dwarf stars, solar systems . . . expand beyond your horizons and discover the Universe!

The Elgin Pubic Museum will explore space through experiments and demonstrations set up throughout the Museum. This is a drop-in program, so no registration is required.

**\$2 per person and another
FREE program for EPM members**

Halloween Sleepover

**Friday, Oct. 29th, 8 pm to
Saturday Oct. 30th, 9 am**

What better way to spend Halloween than at a museum sleepover with your friends? Come dressed in your spooky best and be prepared for a night of fun! Explore the spooky side of science – bats, pumpkins, spiders, sugar skulls and more! Venture through our darkened exhibits to find Halloween tricks and treats, then sleep alongside T-Rex. Share scary stories and s'mores at the campfire. For children 7-12. Registration required and should be completed by October 22.

**Fee \$40 per child, \$30 EPM
members. Reservations Required.**

A - Adult Program

Prehistoric Mounds at Lake Geneva

Thursday November 11th, 7 p.m.

Elginites of the last century frequented Kaye's Park, on the south shore of Lake Geneva, which was a popular resort. The resort included a hotel, steamer landing, natural history museum . . . **and prehistoric mounds.** Discover these mounds through the eyes of archeologist Dr. Catherine Bird during this lecture for adults.

Admission \$7, Members \$4
Reservations Required.

Winter Solstice Program

Saturday, December 18th, 7 pm

The cycle of nature is the ultimate celebration. The Elgin Public Museum invites you to hear about long gone cultures and astronomical significance of the winter solstice. Learn about the Druid Oak King and the Holly Queen and watch the Yule log be burned in a glowing campfire. Learn about the significance of the harvest and wildlife to ancient peoples. Drink warm cider and enjoy campfire treats!

Learn about the significance of the harvest and wildlife to ancient peoples. Drink warm cider and enjoy campfire treats!

**Fee \$5 per person,
EPM members \$3**

Touching on Tradition Special Program

Saturday, December 11th, 2 pm

AKF Martial Arts Dragon Kyuki-Do of South Elgin will be conducting a demonstration and explaining the philosophy and technique of the martial art of Kyuki-Do. Other special weekend events are in the works, so check out website often.

Free with admission to the exhibit.

Continue to check our website for the latest in

Learning Through Adventure.

www.elginpublicmuseum.org

In the categories of geology, the Elgin Public Museum's permanent collection consists of 687 objects, and growing. These include rocks, minerals and fossils. When it comes to stone; light, temperature and humidity are not factors which will cause major problems. It was agreed upon by our staff that this portion of our collection could be stored in the "Lab", if there was room in the "Lab". (Many years ago, the Elgin Public Museum had a full time staff that not only cared for the collection but also did repair, restoration and preservation that necessitated the use of chemicals. Thus a secure room, the "Lab", for conducting this work).

So begins the meticulous task of permanently removing objects from the collection. First we had to open plastic bags that were sealed over 10 years ago. In almost all cases it was immediately apparent why these specimens were in the Lab. Time had taken its toll on many small song-birds. Detached legs, wings, and tail feathers were the norm. Some of the larger specimens had mold damage. Gloves and mask were the uniform of the day. And believe me some of those bags were only opened long enough to get the registration number out of them.

With the registration number in hand, all the original paperwork was retrieved and deaccessioning forms were initiated. At a museum,

you can't just throw something in the garbage that doesn't have value anymore. The staff will make recommendations to the Museum director along with the reasons for removal. If the director agrees with the assessment, it is presented to the board of directors for final approval.

Once the Lab has free space, shelving can be built and the geology collection will have a new home. That being accomplished our zoology and Native American objects can have some breathing room.

Thanks to Beth O'Toole, and volunteers, Stephanie Milanrow, Amanda Wolf and Max Erherth we are well in our way to safer and more organized collection.

Goodbyes and Hellos

Rachel Camacho, who has been a solid employee as our desk attendant for the past year, is heading off to college. Rachel has started her freshman year

at Olaf College in Northfield Minnesota. She has a passion for literature and history and will be enrolled in their liberal arts curriculum. Rachel



Rachel Camacho

has also been accepted in the school's Great Conservations Program. We're all going to miss Rachel, and want to thank her for her dedication to the Museum and wish her good fortune as she takes another step into her future.

Starting September 11th EPM will have a new face as our weekend desk attendant. Replacing Rachel as our weekend attendant is Amanda Wolf. Amanda is finishing up her senior year at NIU where she is majoring in Anthropology and Art History. Amanda has been a volunteer here at the museum for this past year, helping with exhibits, working with collections and getting involved in Ed programs like Science Nights. If you haven't meet Amanda already, stop by

and say hello.

One other note, Diana Beltran, our summer weekend attendant, is pursuing other career opportunities but will continue to assist us at the museum on what we hope will be many occasions.

The EPM Garden



Cup Plants seven feet tall

Three years ago this spring, the City of Elgin converted the area just west of the Museum into a teaching garden with native plants, paths and seating assisted by a group of volunteers from Comcast. Although they planted over a hundred plants and several trees, the plot looked pretty sparse that first summer. What a difference a year makes. Last summer and this summer we had a virtual jungle out there. The great thing about the species of plants used is that they were all native. Our unpredictable weather conditions here in Elgin are no problem for these plants. In rain or drought, heat or cool weather, they seem to thrive.

This summer, Dwight Armistead, one of our Museum Board members, came up with a suggestion that we document and map out the garden. Once done we would have a list of what was where that we could use for education programming and a handout to interested visitors. With field guide, camera, tape measure, and notebook in hand, Dwight has been spending more than a few hours collecting data. This project will be continuing into next spring, but by next summer we anticipate having a preliminary map and list put together.

Volunteers

We've had a GREAT group of volunteers this year and it would not be right to not recognize their contributions. Whether it's assisting in an education event or getting behind the scenes helping our in collections we appreciate their hard work and dedication. Stephanie Milnamow, Amanda Wolf, Phil Steder, Max Ehert, Mike Sureus, Andy Zirk, Theresa McFadden, Robin Getzelman, Lucy Elliott, Alan Stromberg, Jenna Real, Lee Roberts, Jennifer Fester.

Congratulations to Stephanie Milnamow on completing the Masters program in Historical Administration at Eastern Illinois University.

TO BE FOUND IN THE WOODS . . . AND BEYOND

by Marge Fox

During your busy Summer Days – hot and wet – did you run, walk, or just linger through those days? Did you look straight ahead, or did you look up, look down and all around? Did you listen and not hear? Did you look and not see? What you might have missed during the summer is all still around to be discovered this season – Fall.

Fall is another special time in the woods, wetlands, prairies and grasslands. Fall presents another chance to explore places like Lords Park, Bluff City Fen, Trout Park, the Kane County Forest Preserves and even your own backyard.

Discoveries abound to be uncovered where ever you may go during this Fall season:

- Virginia Creeper, turning red, climbing up the bark of a bush or tree
- Woolly Bear Caterpillar looking for a Winter hiding place
- Canada Geese “V-ing” their way south (if they go at all)
- Flocking Monarch Butterflies gathering for their flight to Mexico
- Milkweed pods parachuting their seeds, seeking a Spring landing
- Blackbirds noisily nesting in the tree tops for their long journey
- Shagbark Hickory, Oak and Crabapple trees gifting their Summer fruits for squirrels and chipmunks to bury and deer and birds to eat.
- Leaves of paint-box hues fanning out against blue skies, lifted by the whirling wind
- Fluffy white clouds floating – pierced periodically by a passing aircraft
- Bugs and Toads lingering under a sleeping log – laying silently
- Green moss decorating a stately oak (a sign of a long winter?)
- Footprints in the mud leaving steps of a passing deer, raccoon or fox
- Hiking shoes crunching forward down a disappearing path
- Dragon Flies, dipping and swooping above as they have done for a million years
- Freshly dug burrows providing a winter home for a snake or skunk or groundhog
- Final frog songs fading into deep mud and silence
- Winds, more crisp, twirling leavings – their shapes and colors – to form a mosaic carpet below
- Cockleburs sticking to socks and pant legs
- Golden rod, with other roadside flowers, reaching for the sky
- Grasses, tall and slender corn stalks and wheat and oats rustling in the breeze
- Rain showers, gently falling, upon land and stream and umbrellas

So, if you missed Summer, Fall is upon us – followed by winter and followed again with a Spring Awakening. Get Outside – away from houses, cars, microwaves, electronic games, cellphones, school and work and explore your world. Put on a new set of glasses and also hear, touch and smell the wonders you have been missing. Please accept an invitation to explore outside and enjoy!



Woolly Bear Caterpillar



Milkweed pods



Goldenrod